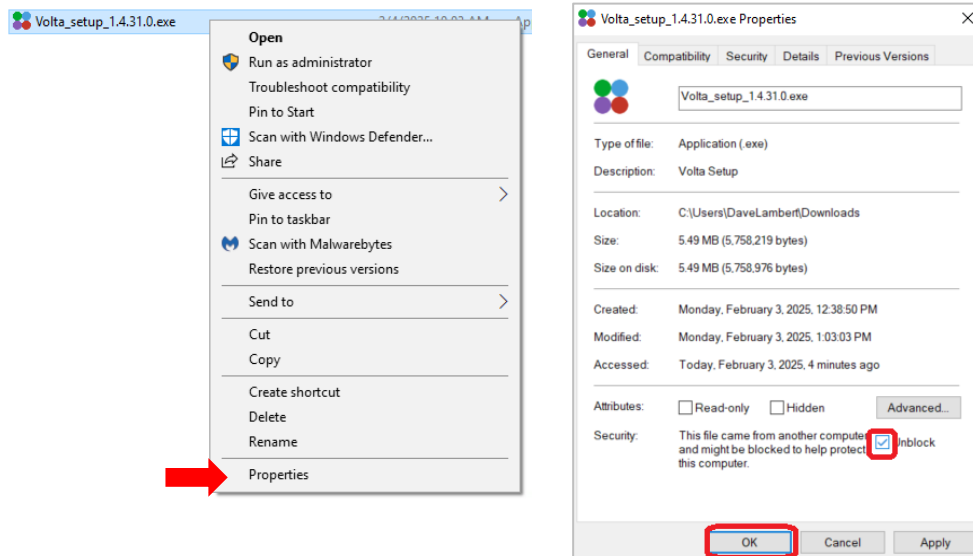


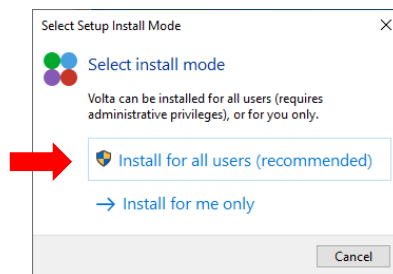
## VOLTA Application - Installation

The newest release of the Lumencor VOLTA application includes a variety of exciting new features and critical bug fixes, offering significant improvements over previous versions. These updates improve performance and user experience, ensuring a smoother and more reliable operation of the VOLTA Scanner. Follow the instructions below to install the latest software release.

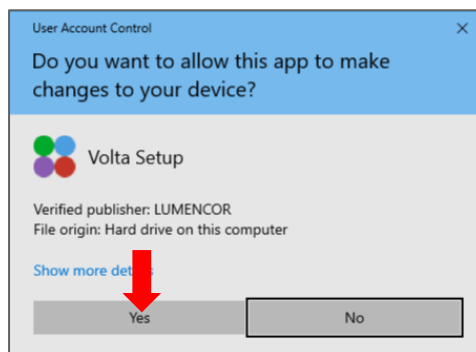
1. Download the installer via the shared link.
2. The installer may need to be unblocked. Right click on the .exe file, open Properties, and unblock the file.



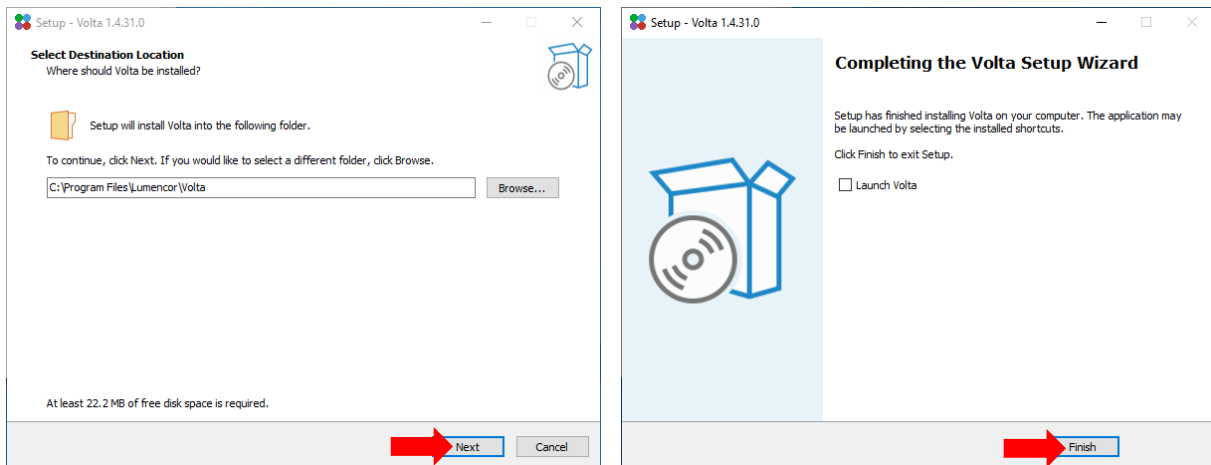
3. For first time installation, install for all users.



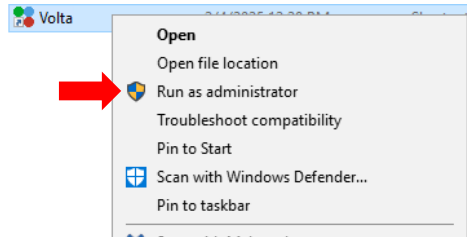
4. Allow the app to make changes.



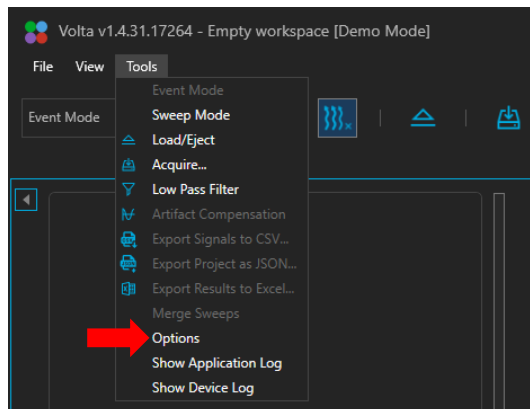
- In the Setup Wizard, install the app in the default location. Once the installation is finished, close the Setup Wizard. Do **NOT** launch the app through Setup.



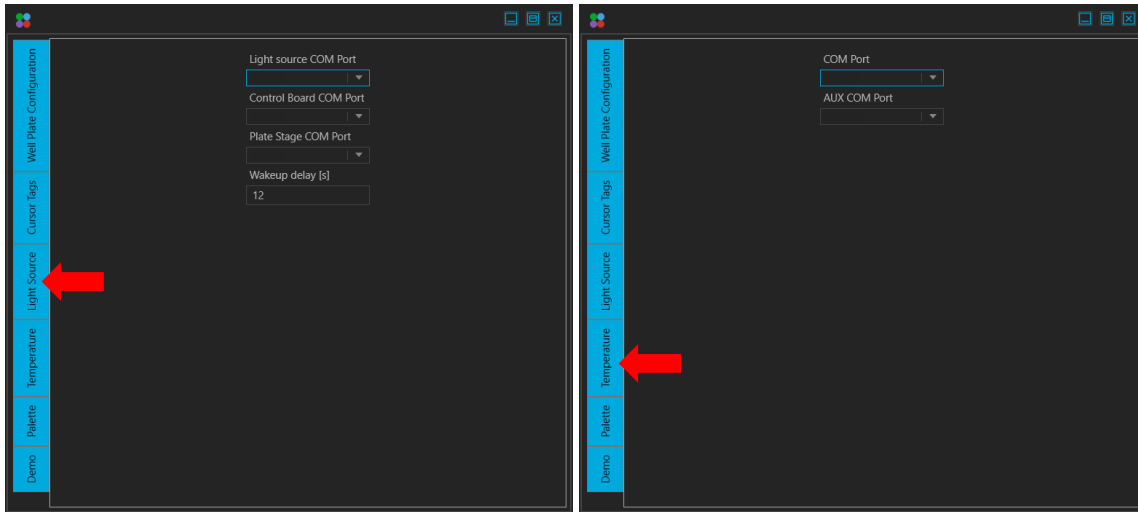
- To launch the VOLTA application, right click the app and select run as administrator.



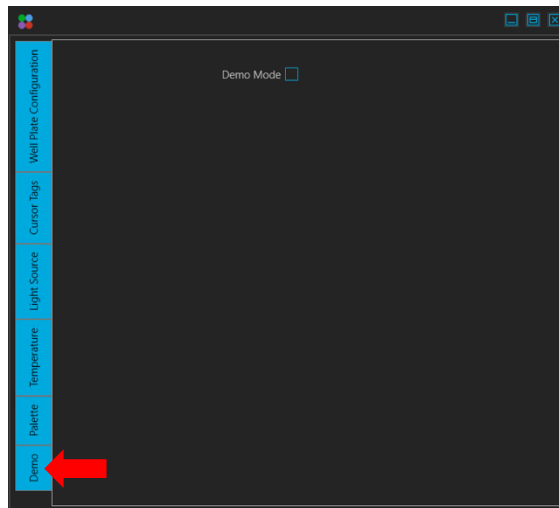
- The application may launch in Demo Mode. To exit Demo Mode, open the Tools dropdown menu and select Options.



- Under the Light Source and Temperature tabs, confirm the assigned COM ports. Contact Lumencor technical support ([techsupport@lumencor.com](mailto:techsupport@lumencor.com)) to either (1) obtain the assigned COM ports or (2) obtain a script that can provide you with the COM ports. The COM ports may vary from one system to another.



- Under the Demo tab, uncheck the checkbox. Close the window.



- The device will initialize and allow scanning of samples.